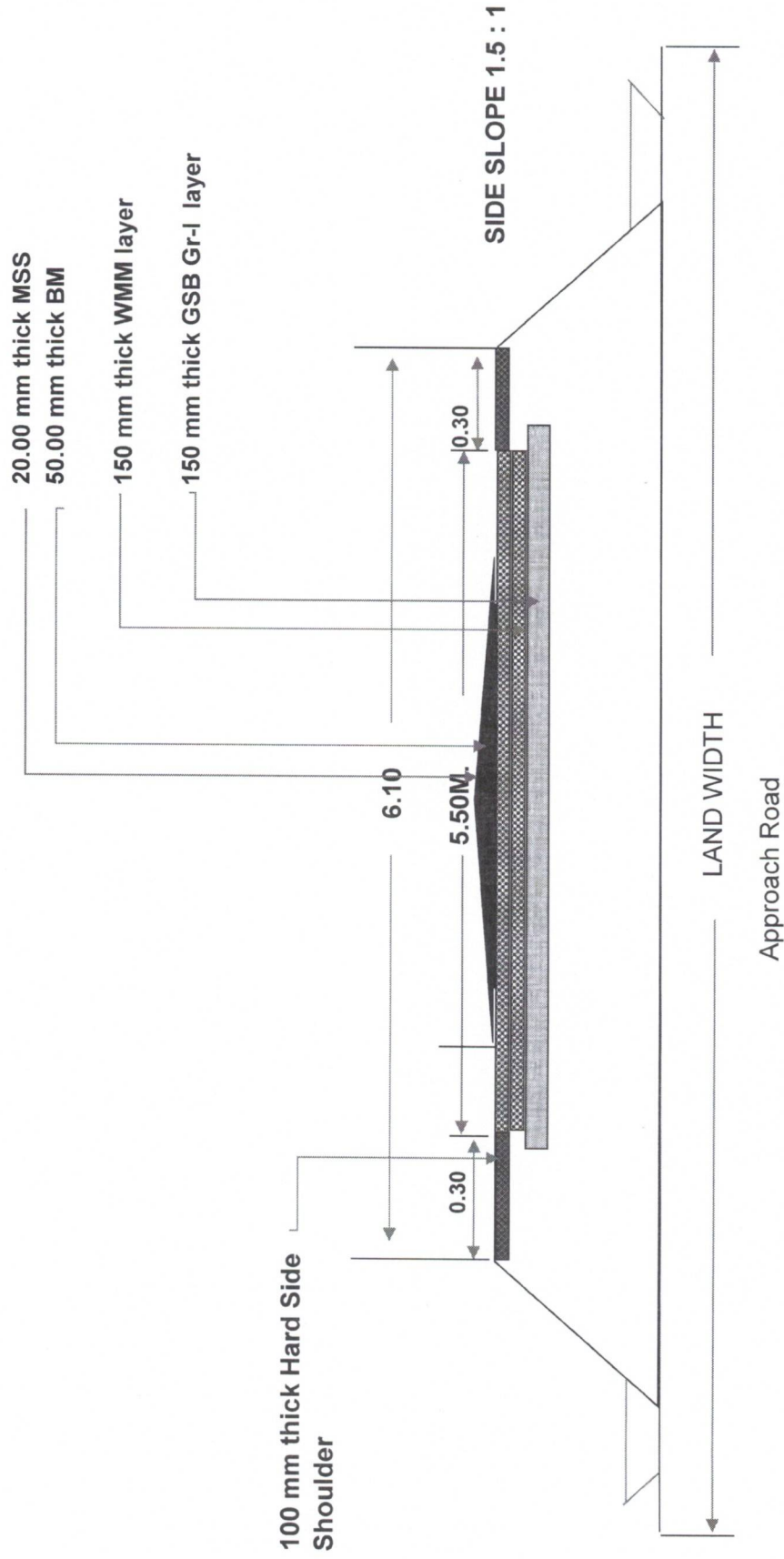


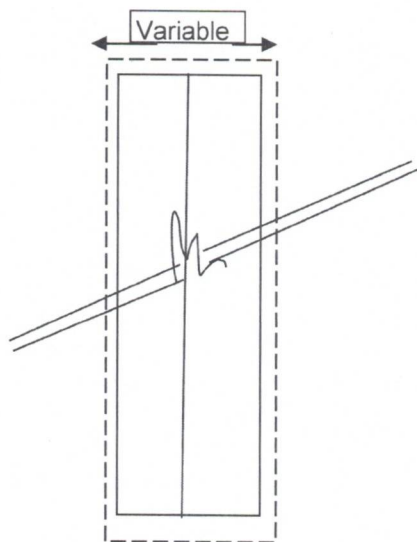
TYPICAL CROSS SECTION OF ROAD



Assistant Engineer
Panchayat (R&B) SubDivision
Pardi

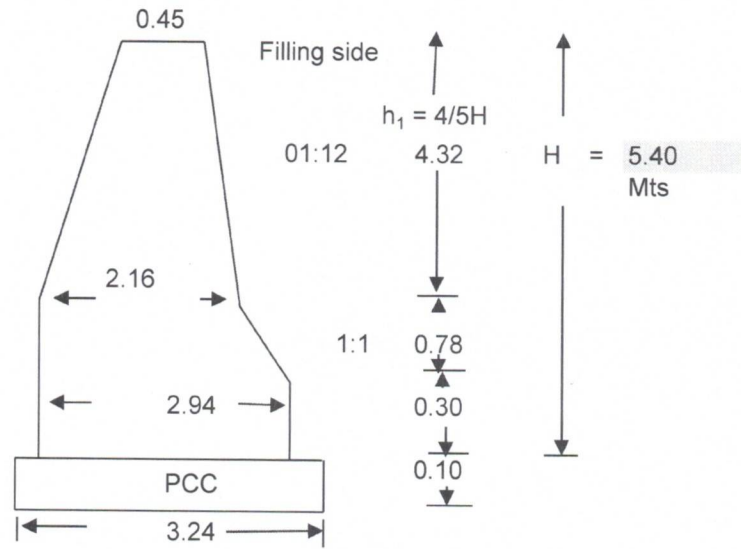
Deputy Executive Engineer
Panchayat (R&B) SubDivision
Pardi

SECTION PROTECTION WALL



**Assistant Engineer
Panchayat (R&B) Subdivision
Pardi**

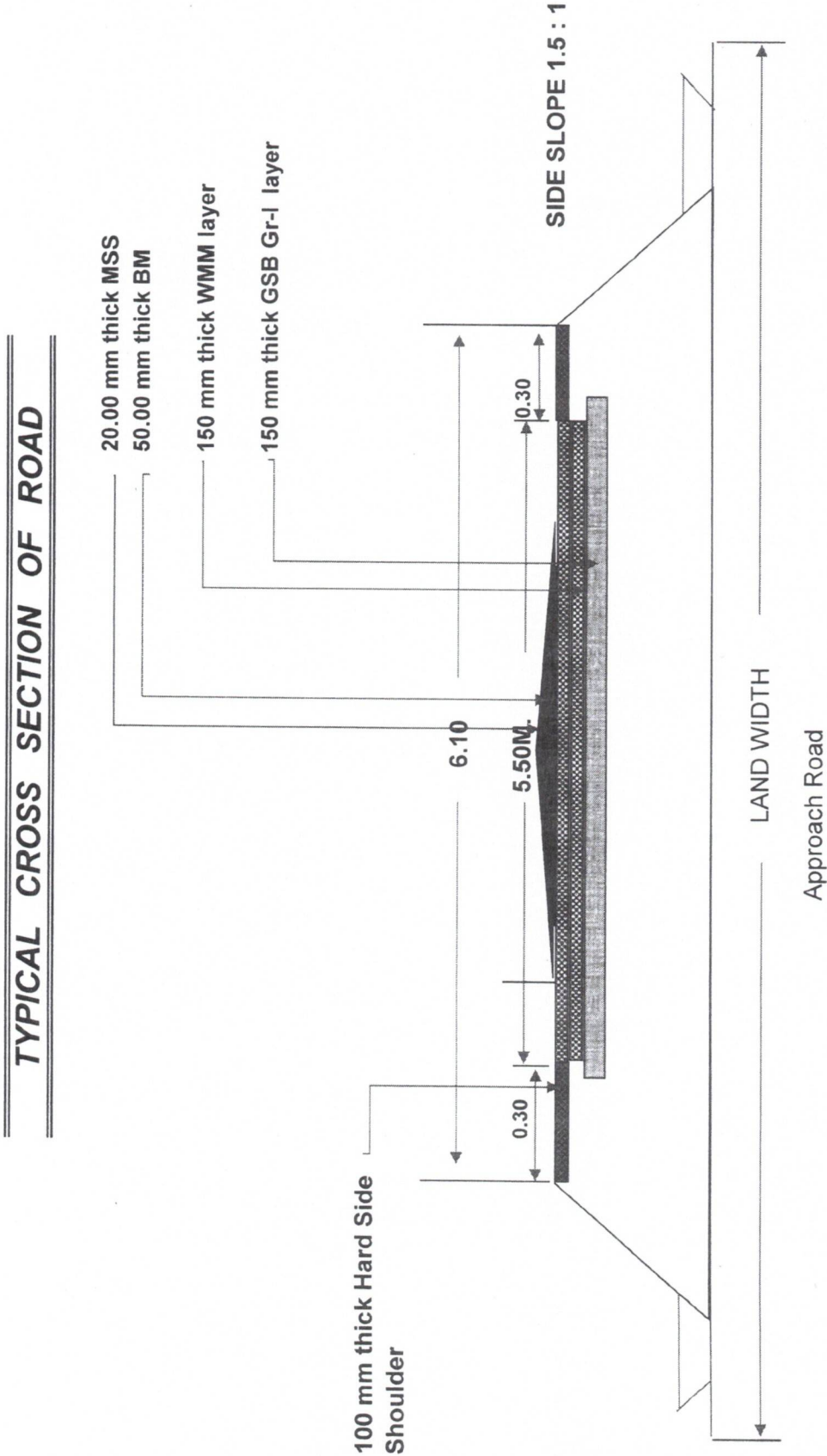
Name of Work :- (Vanbandhu kalyan Yojna-2 MMGSY 2025-26) Construction of Box Culvert on Karajgam Ambamata Temple to Joining Prathmik School Road. Ch. 0/4 to 0/6 Ta.Umargam, Dist.Valsad.



Section of Return Wall

Assistant Engineer
Panchayat (R&B) Subdivision
Pardi

Deputy Executive Engineer
Panchayat (R&B) Subdivision
Pardi

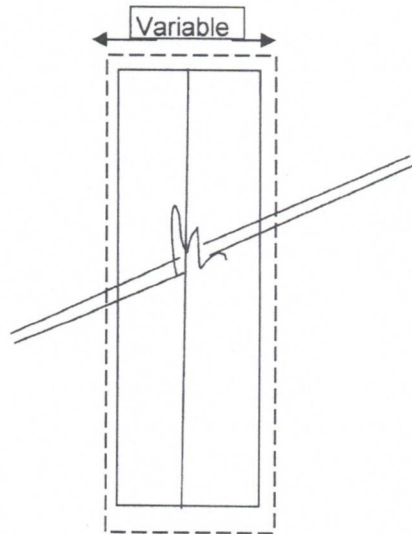
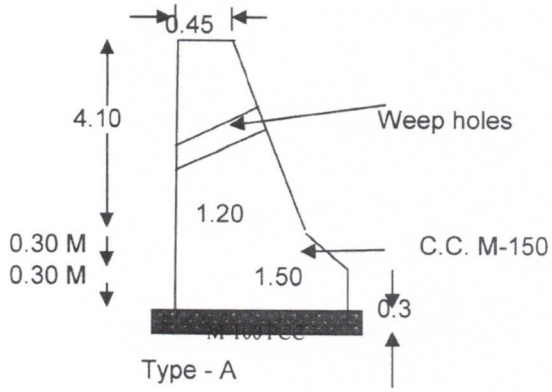


Assistant Engineer
Panchayat (R&B) SubDivision
Pardi

Deputy Executive Engineer
Panchayat (R&B) SubDivision
Pardi

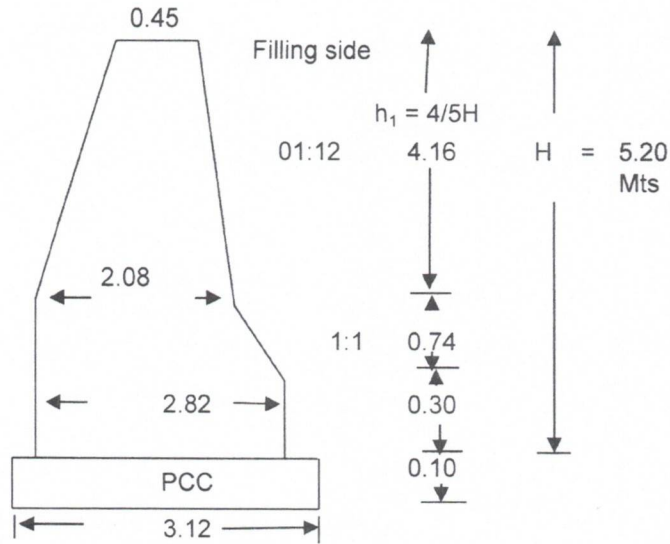
(Vanbandhu Kalyan Yojana -2 (Structure) MMGSY 2025-26 - Structure) Construction of
Box Culvert on Sukesh Vaniya Faliya to Parwasa Road. (VR-Plan) Ch. 2/00 to 2/20 Ta
Pardi Dist. Valsad

SECTION PROTECTION WALL



Assistant Engineer
Panchayat (R&B) Subdivision
Pardi

Name of Work :- (Vanbandhu kalyan Yojna-2 MMGSY 2025-26) Construction of Box Culvert on Karajgam Ambamata Temple to Joining Prathmik School Road. Ch. 0/4 to 0/6 Ta.Umargam, Dist.Valsad.

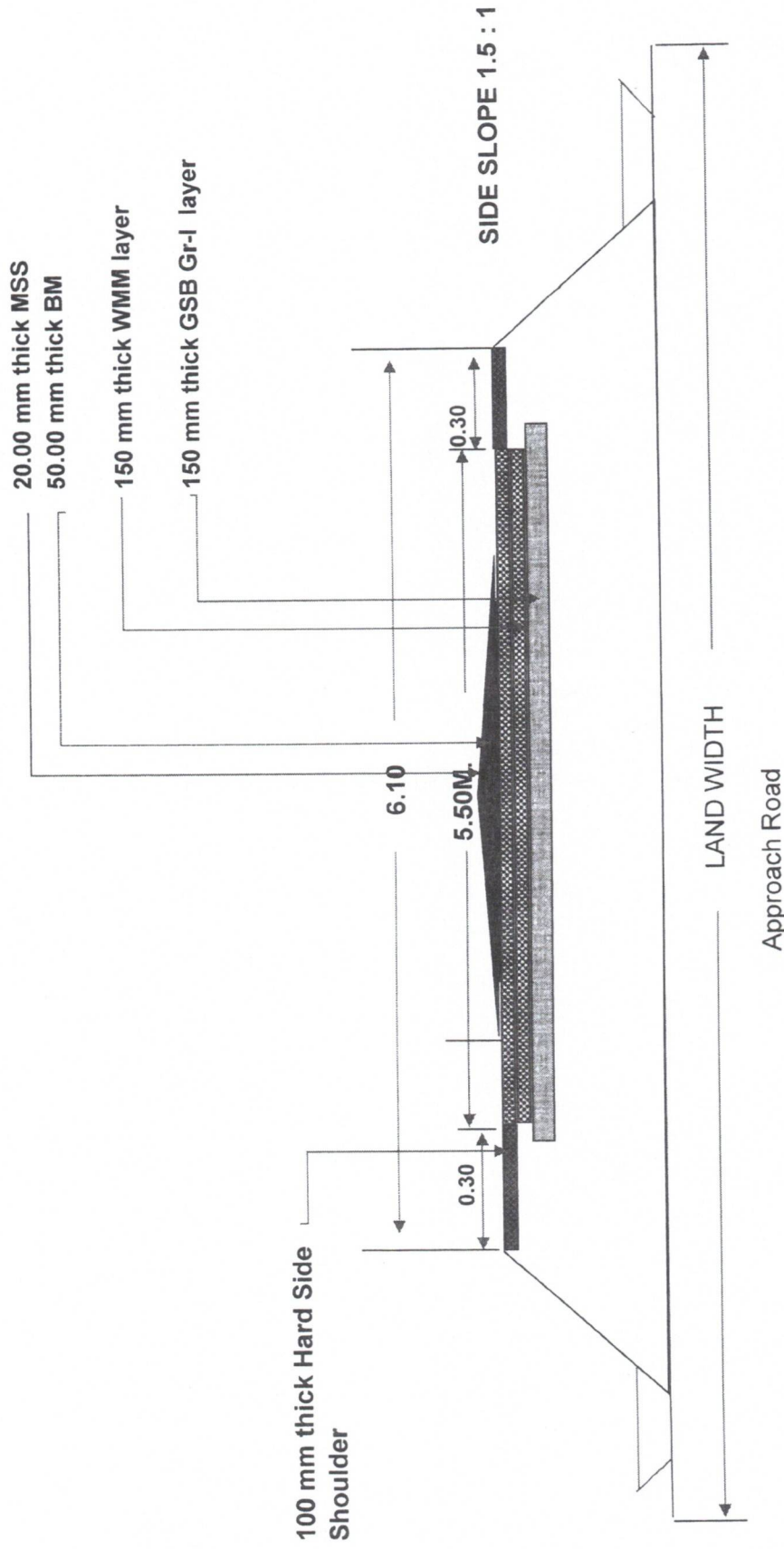


Section of Return Wall

Assistant Engineer
Panchayat (R&B) Subdivision
Pardi

Deputy Executive Engineer
Panchayat (R&B) Subdivision
Pardi

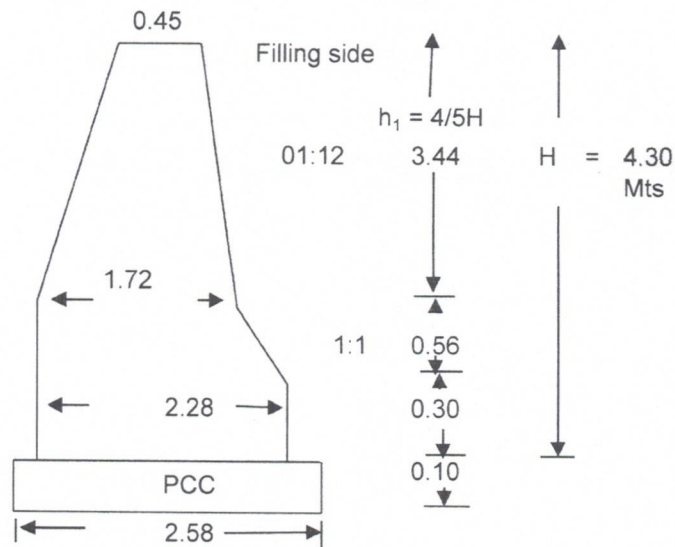
TYPICAL CROSS SECTION OF ROAD



Assistant Engineer
Panchayat (R&B) SubDivision
Pardi

Deputy Executive Engineer
Panchayat (R&B) SubDivision
Pardi

Name of Work :- (Vanbandhu kalyan Yojna-2 MMGSY 2025-26) Construction of Box Culvert on Karajgam Ambamata Temple to Joining Prathmik School Road. Ch. 0/4 to 0/6 Ta.Umargam, Dist.Valsad.



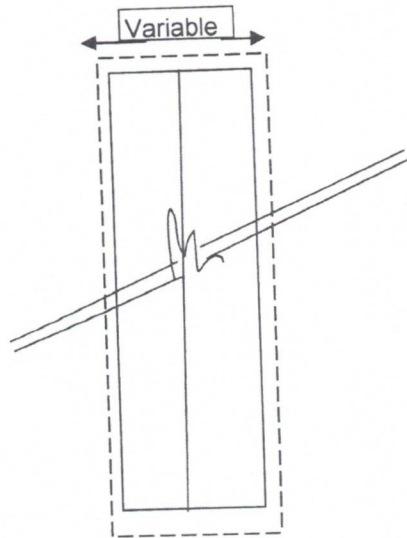
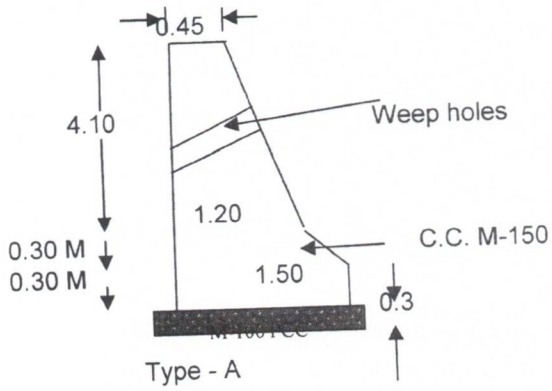
Section of Return Wall

Assistant Engineer
Panchayat (R&B) Subdivision
Pardi

Deputy Executive Engineer
Panchayat (R&B) Subdivision
Pardi

(Vanbandhu Kalyan Yojana -2 (Structure) MMGSY 2025-26 - Structure) Construction of
Box Culvert on Sukesh Kanubhai Desai Cricket Ground to Halpatiwas to Navinagri
Bagat Falia Road. (VR-Non-Plan) Ch. 0/80 to 1/00 Ta Pardi Dist. Valsad

SECTION PROTECTION WALL



Assistant Engineer
Panchayat (R&B) Subdivision
Pardi